

161 Larmer Street Narrandera NSW

3 2 1

Welcome to Koala Place; this completely renovated 1930's cottage is aptly named for its view of leafy Gum trees where Koalas have a history of dropping in for their favourite snack. Respect has been paid to the heritage of this home, with every square inch being renovated or refurbished to revive the period attributes while offering modern and luxurious comfort. Operated as a high-end, short-term rental by the current owners, the property is already set up to provide a steady income for those after an investment.

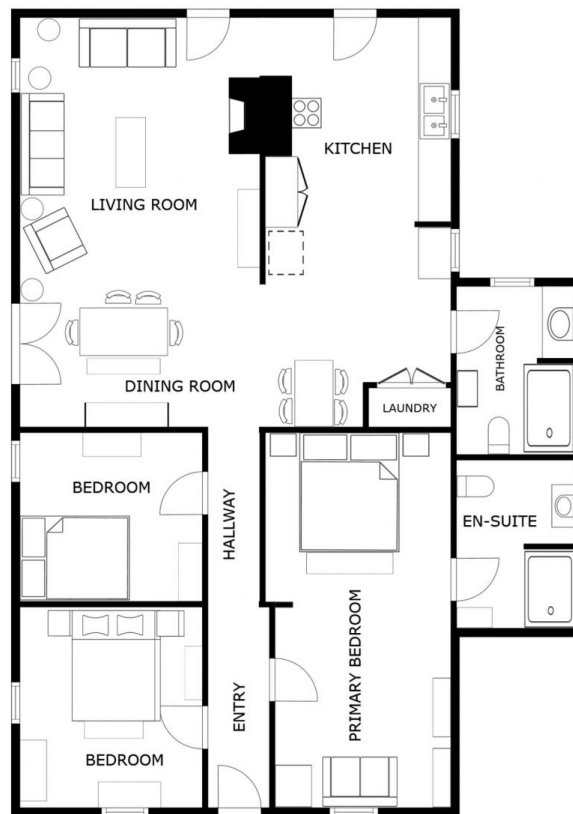
Subtle tones and black accents give a contemporary feel without detracting from the near-original facade, with a decked, wrap-around verandah and fire pit area offering perfect locations to enjoy the country serenity and do some

[For full version visit the website](https://www.miservices.com.au/8106624)

Type : House
Price : \$490,000 - \$530,000
Building Size : 130 sqm
Land Size : 383 sqm
View : <https://www.miservices.com.au/8106624>



Ben Gallenti
02 6953 4869



Floorplan is an indication only, actual sizes may differ.